

# What's New in Visual Performance Manager 5.0

## Executive Level Views

New visual tools provide unparalleled visibility for managing business services. Executives can now quickly see how effectively the organization is performing against established service levels, and can rapidly determine the impact of applications slowdowns by actual site and user experience.

## Cisco WAAS Integration

Now users can accurately measure application performance in WAAS environments. Until now, enterprises deploying Cisco WAAS had no easy way to measure, on a transaction by transaction basis, how a Cisco WAAS implementation affected end-user experience. Visual Performance Manager 5.0 provides the visibility that allows organizations to truly understand the nature of performance slow downs in a Cisco WAAS environment, allowing them to recognize the full benefit of their Cisco WAAS deployment so that users can see which WAAS policy is applied for each transaction and measure the actual end-user response times for all optimized and unoptimized transactions in a Cisco WAAS environment.

## Server Health Metrics

A more intelligent approach to application performance management that correlates server health metrics with application performance data, giving deeper visibility into the data center. Users can now quickly understand if slow application response times are due to overloaded servers, and can view server health trends over time.

## OptiView Network Analyzer Integration

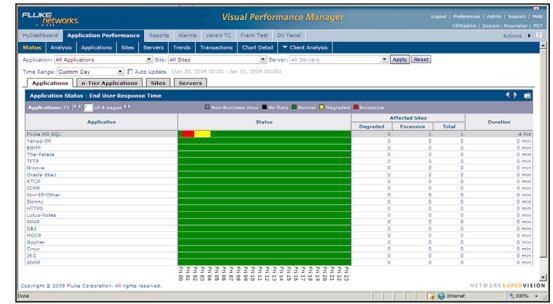
Visual Performance Manager 5.0 harnesses the full power of the Fluke Networks product portfolio by allowing users to launch the OptiView Integrated Network Analyzer from within the Visual Performance Manager interface, giving a complete set of tools to troubleshoot all seven layers of the network. No other solution can provide this comprehensive view of application performance.

## Improved Administration, Alarming and Troubleshooting Capabilities

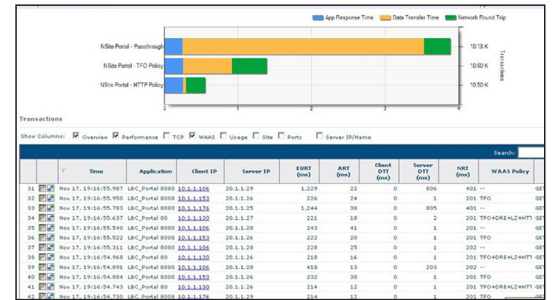
All aspects of the Visual Performance Manager 5.0 system have been streamlined. Improved transaction visibility and work-flow based navigation make it even easier for users to drive to root cause when application slow-downs occur. Additionally, new tools for simplified system management improve productivity since less time needs to be spent on Visual Performance Manager administration.

For more information on Visual Performance Manager and its application performance capabilities, visit [www.flukenetworks.com/applications](http://www.flukenetworks.com/applications).

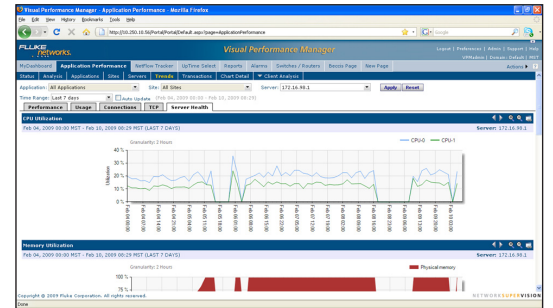
Copyright © 2009 Fluke Corporation. All rights reserved. 3454106 Rev. A



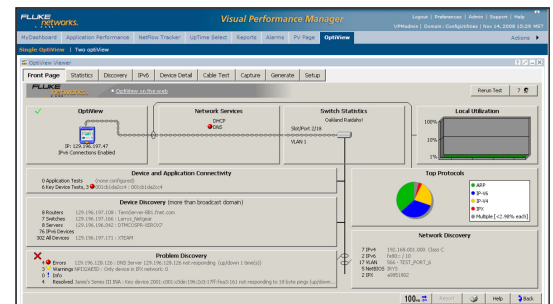
High level status of applications views



Cisco WAAS Aware Measurements



Detailed server health trends



Single Pane of Glass View with OptiView Network Analyzer



New Server Configuration Page with Server Health Poller